

## Manager insight – 31 October 2009

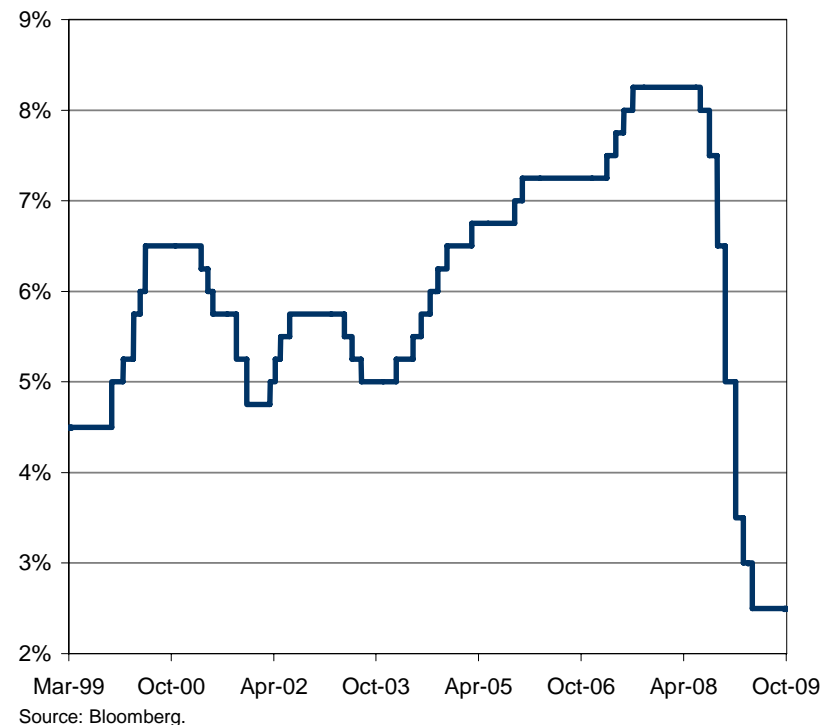
The driver of the Portfolio's performance is the level of interest rates offered on the call deposits it holds with a range of New Zealand banks. In turn, the returns from these call deposits are driven by New Zealand's Official Cash Rate (OCR) which is set by the Reserve Bank of New Zealand (RBNZ).

The objective of the Portfolio is to achieve returns competitive with bank deposits without a 'lock in'. The Portfolio has returned 0.19%<sup>1</sup> for October versus the NZX Call Index return of 0.21%<sup>2</sup>. Over the past 12 months it has returned 3.34%<sup>1</sup> versus the NZX Call Index return of 3.49%<sup>2</sup>.

In late October the RBNZ again left the OCR at 2.50%, the lowest it has been since inception in 1999. This represents a 5.75% decline from 16 months ago when the OCR was 8.25%, as shown in the accompanying chart. This rapid reduction in the OCR has been in response to the deteriorating global outlook, tightening credit conditions, widening interest rate spreads and continued contraction in the New Zealand economy.

With the New Zealand economy showing signs of improvement, the market is starting to price in hikes in the OCR from March 2010. However, the RBNZ commented at the last meeting that, **"In contrast to current market pricing, we see no urgency to begin withdrawing monetary policy stimulus, and we expect to keep the OCR at the current level until the second half of 2010."** So while the OCR will return to a more neutral level in the future, this is likely to be some time away.

### New Zealand Official Cash Rate (OCR)



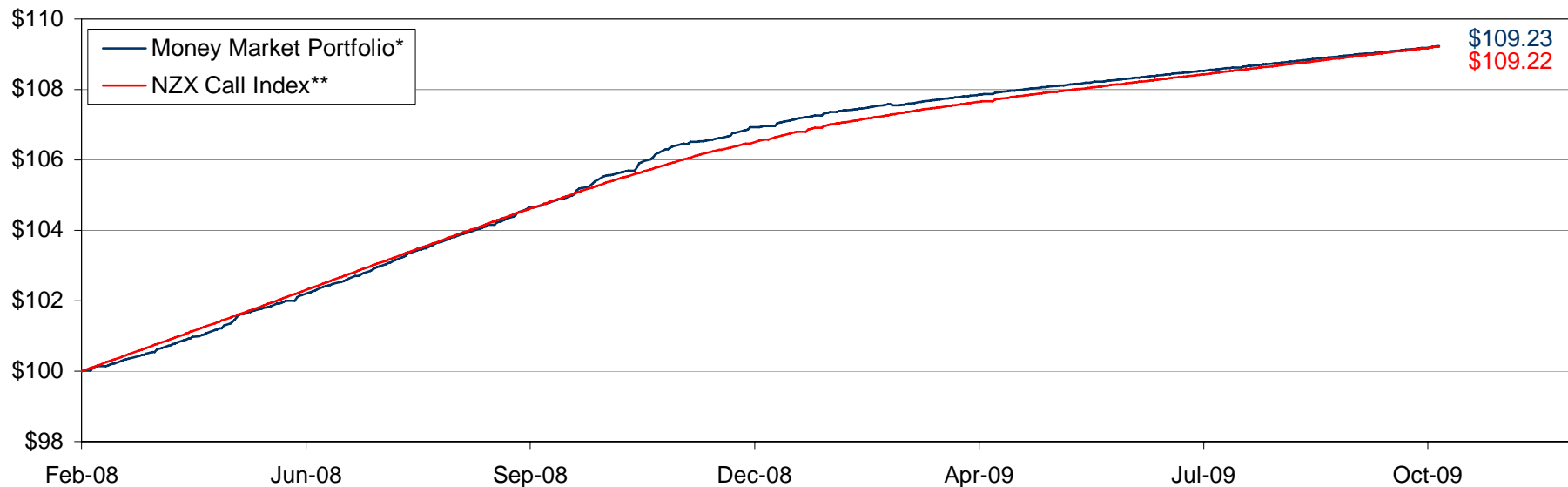
The Portfolio remains invested in call deposits with four New Zealand banks, providing a diversified bank exposure and the benefit of the New Zealand Retail Deposit Guarantee Scheme.

<sup>1</sup> Returns are stated after Portfolio fees and expenses, but before any advisory fees or investor tax. Past performance is not necessarily an indication of future returns. <sup>2</sup> Source: Bloomberg.

# Money Market Portfolio

Performance since inception (28 February 2008) to 31 October 2009 (Part 1)

MMP performance attribution	1 month	3 month	6 month
Positive	Running yield	Running yield	Running yield
Neutral	Int. rates unchanged	Int. rates unchanged	Int. rates unchanged
Negative	n/a	n/a	n/a



Comparison	1 month	3 month	6 month	1 year	2 year pa	5 year pa	7 year pa	Since inception pa	Maximum drawdownx
Portfolio*	0.19%	0.56%	1.11%	3.34%	-	-	-	5.42%	-0.04%
NZX Call Index**	0.21%	0.63%	1.27%	3.49%	-	-	-	5.41%	0.00%

**IMPORTANT:** Please refer to the slide that follows for the footnotes relating to this slide.

## Performance since inception (28 February 2008) to 31 October 2009 (Part 2)

### **Money Market Portfolio**

- \* Returns are stated after portfolio fees and expenses, but before any advisory fees or investor tax. Past performance is not necessarily an indication of future returns.

### **Comparative index**

- \*\* The comparative index is the NZX Call Index. Source: Bloomberg.

### **Maximum drawdown**

- x Returns should be looked at in conjunction with the level of risk associated with an investment. For this reason, we have included the 'maximum drawdown' for both the Portfolio and the comparison. Maximum drawdown is a measure of volatility and represents the largest cumulative decline experienced during the reporting period.

# Money Market Portfolio

Portfolio summary as at 31 October 2009

## Portfolio summary

Number of bank exposures	4
Leverage utilised	Zero
Weighted average running yield (approximately)	2.3% <sup>1</sup>
Weighted average credit rating	A1+ / AA
Weighted average interest rate duration	0 days

Sector / Security	Portfolio value	Proportion of portfolio	Weighted average life	S&P rating	Gross yield
<b>Bank deposits</b>					
ANZ call account	\$4,373,885	24.9%	0 days	A1+ / AA	2.6%
BNZ call account	\$4,312,061	24.5%	0 days	A1+ / AA	2.5%
Westpac call account	\$4,338,897	24.7%	0 days	A1+ / AA	2.5%
ASB Bank call account	\$4,303,771	24.5%	0 days	A1+ / AA	2.5%
Westpac current account	\$259,078	1.5%	0 days	A1+ / AA	2.5%
<b>Total</b>	<b>\$17,587,693</b>	<b>100.0%</b>			

<sup>1</sup> The running yield is stated after the deduction of management, custodial and trustee fees. The running yield is not the actual return of the portfolio, nor is it a projection or forecast. Note: Rounding may affect the subtotals and totals.

For further information or to request a copy of the relevant Investment Statement, please contact New Zealand Funds Management Limited.

Past performance is not necessarily an indication of future returns.

**DISCLAIMER:** These Portfolio Insights have been provided for information purposes only. The content of this document is not intended as a substitute for specific professional advice on investments, financial planning or any other matter.

While the information provided in this document is stated accurately to the best of our knowledge and belief, New Zealand Funds Management Limited, its directors, employees and related parties accept no liability or responsibility for any loss, damage, claim or expense suffered or incurred by any party as a result of reliance on the information provided and opinions expressed in these Portfolio Insights except as required by law.